

COMPANY  
PRESENTATION  
2015



**DROPS FORUM**  
17<sup>th</sup> September

<b>Name</b>	<b>Paul Walker</b>
<b>Role</b>	<b>Assessor / Internal Verifier</b>

<b>Name</b>	<b>Tom Wetton</b>
<b>Role</b>	<b>RigCentral Specialist</b>

# DSL Company Profile

---



**DSL specialises in range of products, construction, inspection and engineering services to drilling contractors, operators and shipyards worldwide.**

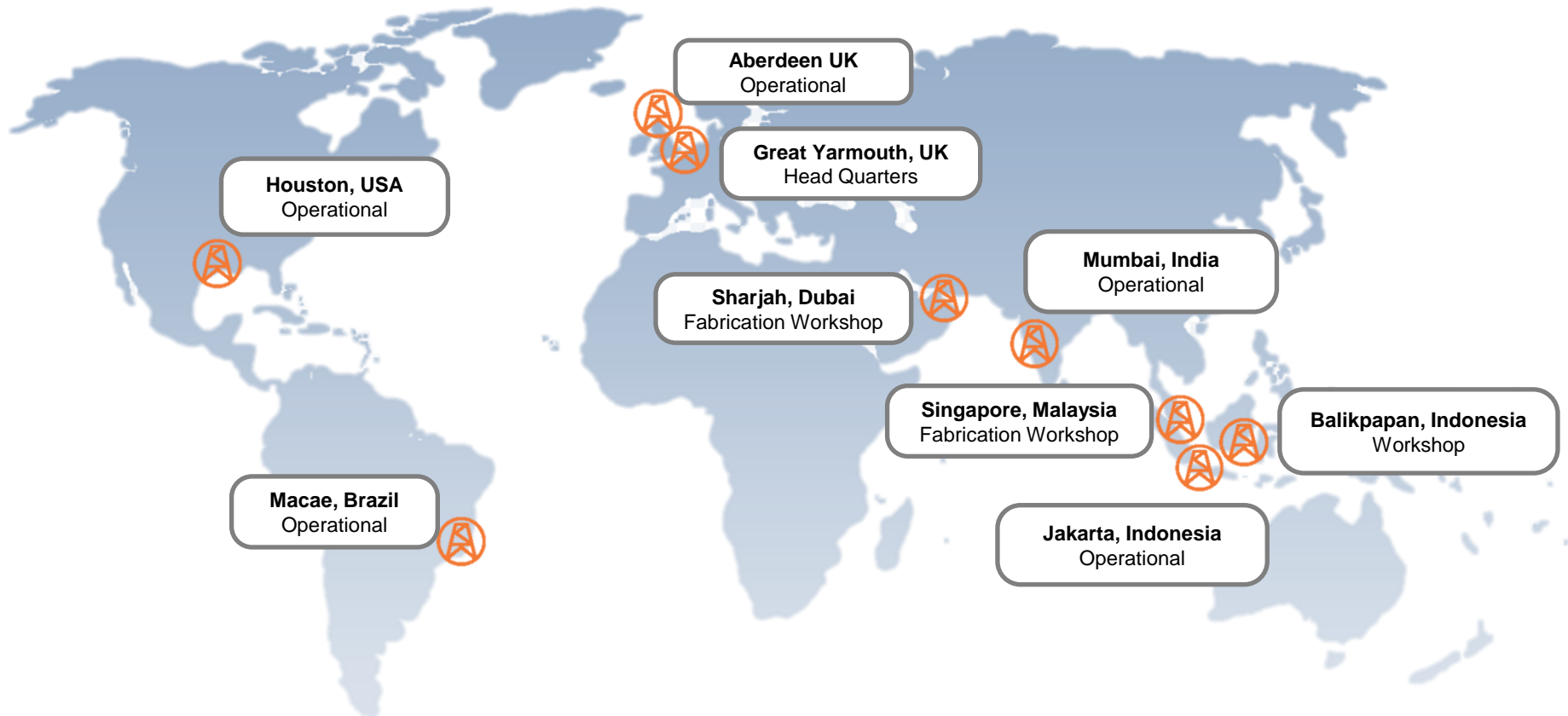
DSL are qualified to perform works required for your drilling structure from inspections, re-certification, replacement of members through to upgrades and decommissioning.

## ***API 4F & 8C Licensed***

With over 30 years experience of handling drilling structures worldwide, DSL profiles as the industry leading service provider.



# Worldwide Locations



**Awareness of dropped objects has come to the forefront in recent years focusing the importance of training requirements for the safety of personnel and rigs worldwide.**

Utilising on our experience we realised the need to ensure that all our employees were aware of the same requirements for identifying risks and prevention methods, regardless of location or rig type and produced our own E-learning package to support this.

The purpose is to ensure our personnel are aware of the same principles regardless of location for:


- Identification of potential dropped objects.
- Causes and consequences of a dropped object.
- Prevention and management of dropped objects.  
(e.g. methods of retention, uses and limitations)

# Dropped Object Awareness E-learning

Course designed to be as Interactive as possible.

Using real life scenarios where possible to help identify potential dropped objects and possible preventative and corrective actions.

Raise awareness of DROPS forum and their role in promoting best practice.

The screenshot shows the 'Course Structure' page of the DSL e-learning program. The background is a high-angle photograph of an offshore oil rig against a blue sky. A semi-transparent white box in the center contains the course details. At the top left of the interface is the DSL logo, and at the top right is the title 'Course Structure'. The course modules are listed below the introductory text. At the bottom, there is a navigation bar with 'HOME', 'MENU', and 'HELP' buttons, and a video player control bar with a play button and a progress slider.

**DSL**

## Course Structure

As this course is interactive the program may vary depending on your availability. You must pass each Module before you progress onto the next modules.

You can stop at any time and return to the course when it is convenient to yourself.

- Module 1 - Introduction
- Module 2 - What is a Dropped Object?
- Module 3 - Consequences of Dropped Objects
- Module 4 - Causes of a Dropped Object
- Module 5 - Management of Dropped Objects
- Module 6 - Prevention of Dropped Objects
- Module 7 - Assessment

**HOME** **MENU** **HELP**

||



# Dropped Object Awareness E-learning



Causes of a Dropped Object

### Potential Dropped Object

On this image there are two potential dropped object issues to spot. Can you find them all?

[HOME](#) [MENU](#) [HELP](#)

Management of Dropped Objects

### DROPS

All installations and facilities need to have management processes in place that help:

- Identify and assess the potential for dropped objects
- Mitigate the likelihood of dropped objects incidences taking place

Click on each image to learn more about the Dropped Objects Prevention Scheme (DROPS).

[HOME](#) [MENU](#) [HELP](#)

Prevention of Dropped Objects

### Permanently Attached Equipment

Take a look at the pictures here. Each one highlights a piece of equipment that is permanently attached to the rig structure, but which needs careful consideration with regard to Dropped Objects.

Can you drag the correct name labels across to the relevant piece of equipment?

Navigation Lights

CCTV Cameras

Lighting Systems /Cables

Crane Boom Cameras

[HOME](#) [MENU](#) [HELP](#)

Prevention of Dropped Objects

Perfect. Navigation lights are exposed to the harshest elements and need to be checked carefully.

Ensure the units are secure and that the fixings are suitably tight and not corroded. Remember to check the body of the lights to ensure they are intact and that any cables are secure and suitably attached.

If the light is attached to a post or support, check it for any damage and that it is securely fixed to the structure.

[CONTINUE](#)

[HOME](#) [MENU](#) [HELP](#)

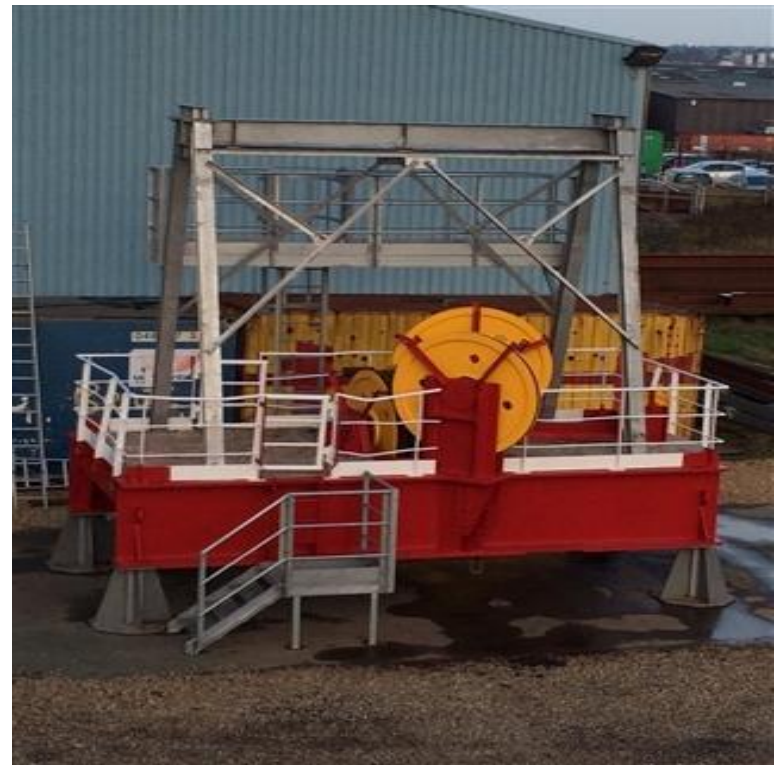
# Dropped Object Awareness E-learning

---



- Feedback from personnel positive regarding content and relevance.
- Personnel especially liked the interactive portions of the course as it was not “ Just another power-point presentation to click through”.
- The course is not location specific therefore will allow personnel to transfer globally and apply the same skill set.
- E-learning functionality allows for the course to be completed from any office/rig/home worldwide with 24 hours access
- API-U Accreditation achieved

For delivery of further practical training regarding dropped objects we try to use assessments that reflect as much as possible real life scenarios. To that effect we utilize our 40ft training derrick, land rig and crown unit.





## **DSL has developed its own inspection and asset management solution, RigCentral.**

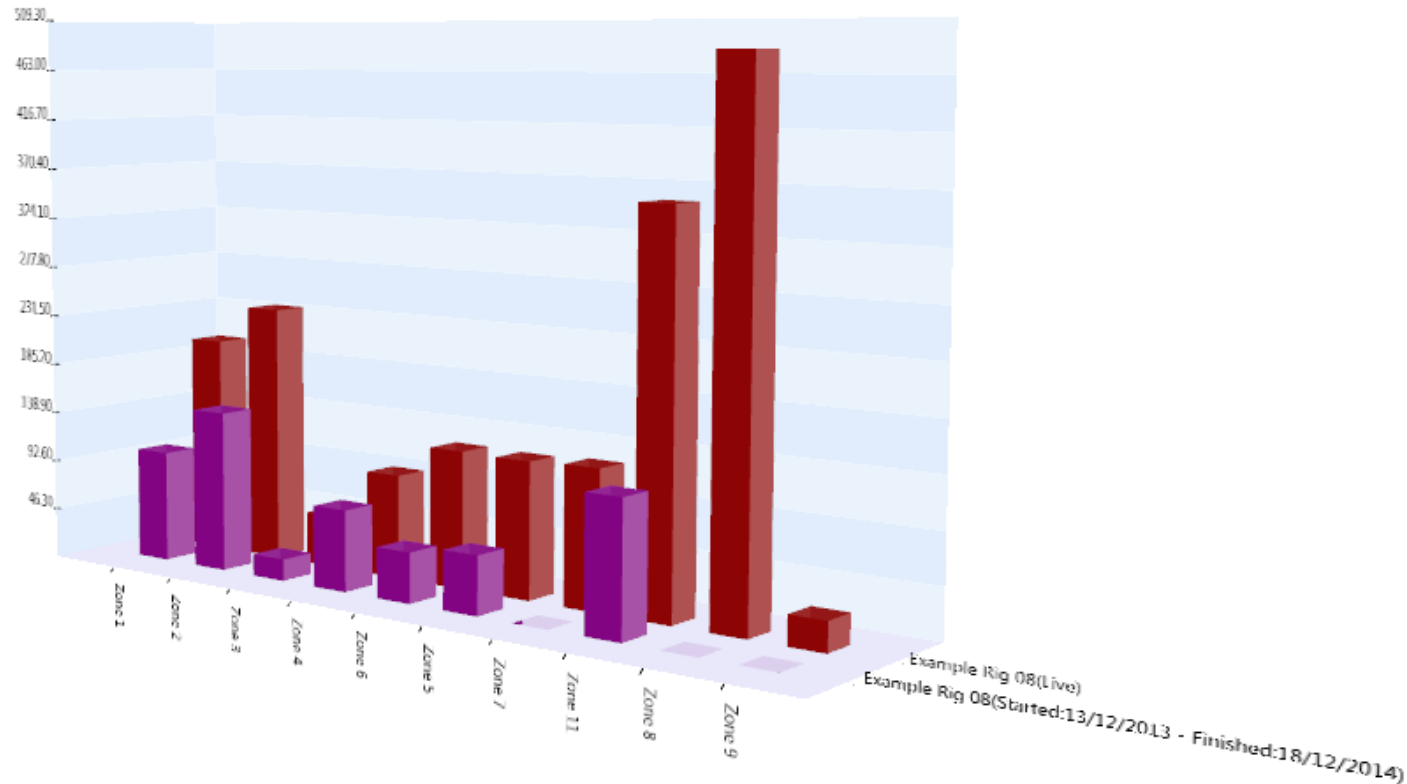
We use RigCentral for our inspection requirements and have harnessed the experience we have performing dropped object surveys to further develop and improve the software.

RigCentral offers many, very useful functions to help identify and prevent potential dropped objects which include; defect / corrective actions lookups, trend identifying reports and individual or fleet wide rig comparisons.

# RigCentral & Asset Tagging



# RigCentral – 3D Charting

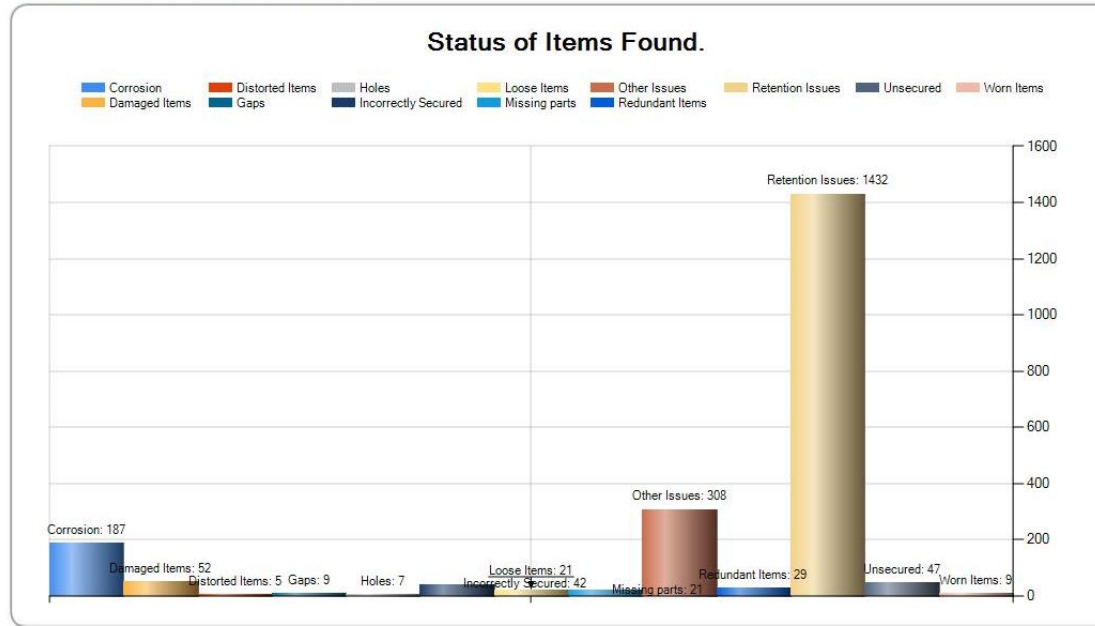


Ability to see how the current dropped object survey compares to previous surveys on the same installation.

# RigCentral – Fleet Comparisons



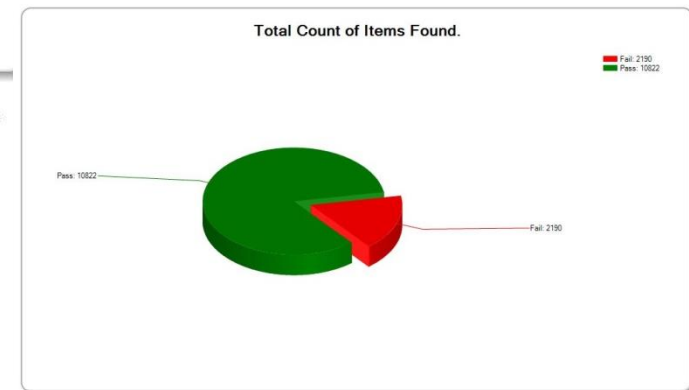
## Fleet wide Status of Items Found:



Report Produced by: RigCentral [www.derricksl.com](http://www.derricksl.com)

Reports can be produced showing dropped object inspection's findings across an entire fleet, allowing the end user to identify trends and monitor the status of items and potential issues.

## Fleet wide Status of Items Found:



Report Produced by: RigCentral [www.derricksl.com](http://www.derricksl.com)

# Inspection Look-ups



RigCentral gives inspectors guidance by identifying the item type and location, then suggesting recommended fastening methods and inspection procedures.

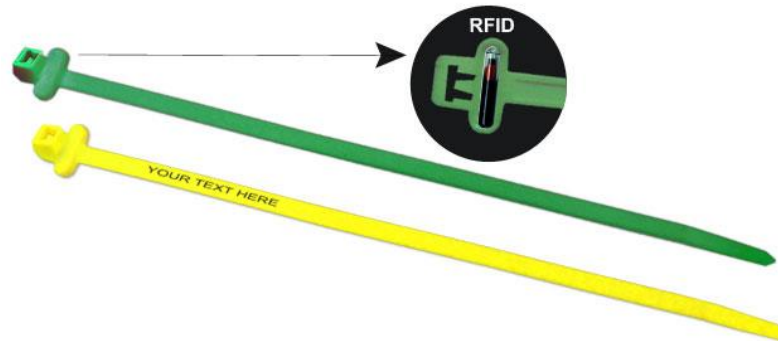
Once a defect is selected, suggested corrective actions are also shown to the user.

A screenshot of the RigCentral 'Dropped Object Inspection' form. The form is divided into two main sections: a left sidebar with input fields and a right main area with a photo and location information. The left sidebar includes fields for Status (set to 'Defective'), Reference Number (ACC 102), Primary Fastening (Bolted), Secondary Retention (None), Possible Fastening Method Example (Welded pipe hinge to handrail structure come with spring close. Welded hinges, hooks & latches. Safety slings fitted with 4 part shackles.), Inspection Frequency (30 Day), Inspection Procedure (Check all welds and bracket bolts for signs of corrosion, condition of safety slings/chains and shackles. Ensure shackles fitted with split pins.), Defect Details (No secondary retention), and Corrective Actions (Add Secondary retention). The right main area features a large photo of a red metal structure, a 'Current Location' field (Accommodation STBD Lvl 3), and a 'Maintenance' button. The top of the form has a toolbar with icons for adding items, taking photos, and other functions.



## What is RFID Tagging?

- RFID (Radio Frequency Identification) Tagging involves attaching an ATEX approved RFID Tag to an asset or location (with secondary retention), the tag is then paired with the Item in RigCentral.
- An RFID tag can be thought of as a unique serial number or barcode
- Scanning the tag will pull up all the information about the item such as; photos, previous inspection history, certificates, documentation and other maintenance related information aiding re-inspection and maintenance plans and also speeding up the inspection process.



## What are the benefits of RFID Tagging?

- With the use of RFID tagging, we can prove that an inspector has been within touching distance of an item to perform their inspection, ensuring that 3<sup>rd</sup> party inspectors are visiting every item.
- Finding items previous inspection data becomes faster.
- With the use of RFID tags, we can identify exactly when an item was last visited.
- Item maintenance and corrective actions can be displayed on the screen within seconds of visiting an item, giving subsequent inspectors all the information at their disposal to correct any issues.



**THANK YOU FOR YOUR TIME**

---



## **Any Questions?**

**Tom Wetton**

**Paul Walker**

Email: enquiries@derricksl.com

Tel: +44(0) 1493 669141

Address: Derrick Services (UK) Limited  
Falgongate House, Faraday Road  
Harfreys Industrial Estate  
Great Yarmouth  
Norfolk  
NR31 0NF

RigCentral Website: [www.derricksl.com/rigcentral.aspx](http://www.derricksl.com/rigcentral.aspx)

E-Learning Website: [www.dsl-trainingacademy.com/](http://www.dsl-trainingacademy.com/)

**DSL is dedicated to the complete integrity of its operations and this is reflected in our commitment to Quality and HSE.**

DSL operates a comprehensive quality management system which complies with ISO 9001:2008 and API Specification Q1 and applies to every aspect of its business activities.

Our training and competency system for rig builders stands alone within the industry – This helps to make DSL's rig builders some of the most experienced and safest the industry has to offer.

Our multi-skilled in house team respond quickly, safely and efficiently, providing you with a complete solution to your requirements.

Together with our commitment to HSE, makes DSL an industry leader.

