



ISP

INTREPID SAFETY PRODUCTS

Walter Haulez

Member of Dutch Standardization Institute

INTREPID SAFETY PRODUCTS B.V.

The Netherlands

Table of Content:

1. Instant Set Polymer

- a) History
- b) Properties
- c) Applications

2. Toeboard Links (T5)

- a) What are they
- b) Applications

3. Standards

- a) OSHA/ISO/NORSOK
- b) Design strength

4. Safety Gates

- a) Strength
- b) Résumé

INSTANT SET POLYMER (ISP)

- Around 1970, Dow accidentally discovered a unique polyurethane.
- For several years, R&D refined the properties.
- In September 1975, Dow commercialized ISP.
- Intrepid was started in November 1978.
- We still are worldwide the ONLY user this unique Polyurethane

Unique properties of ISP

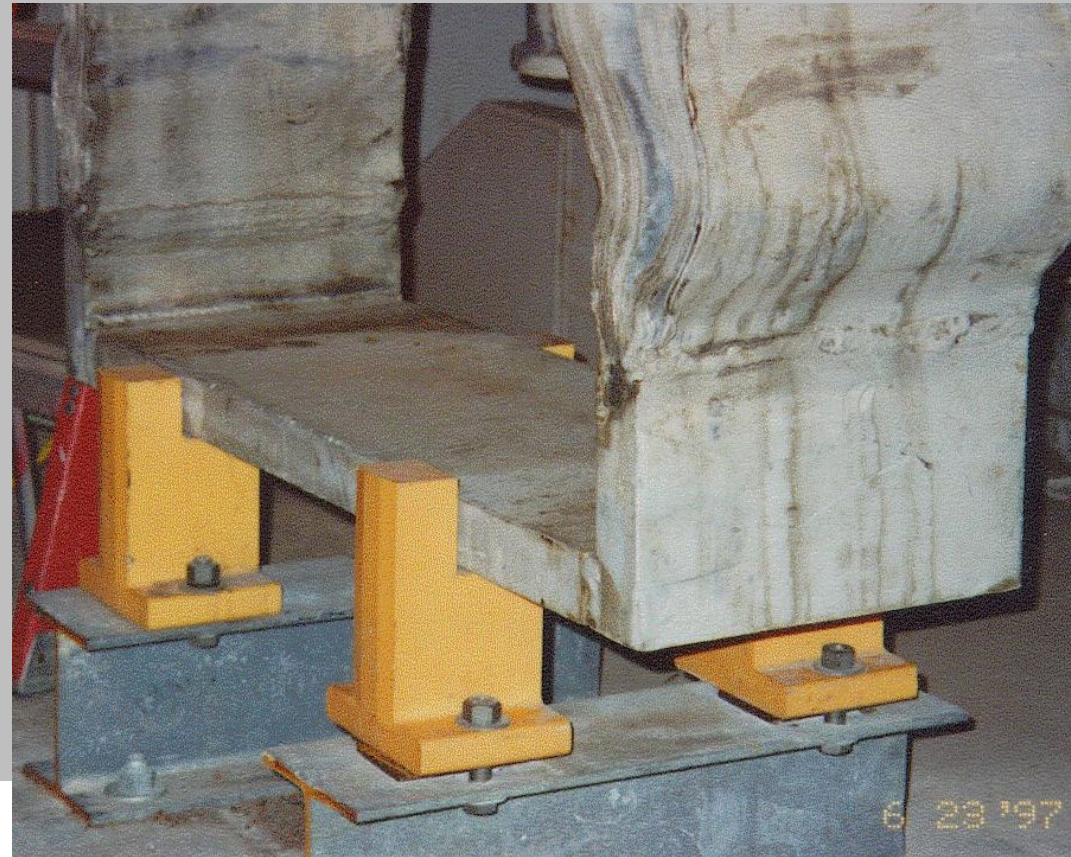
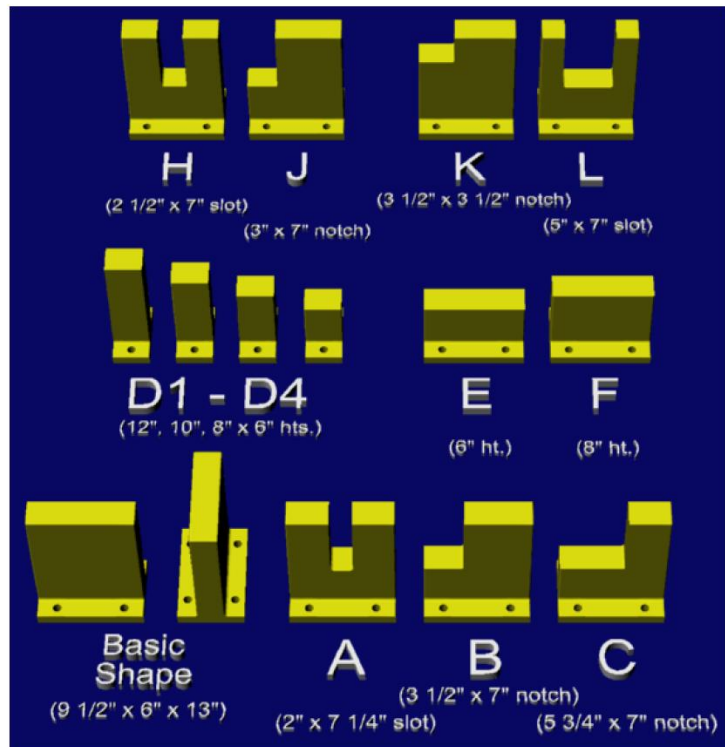
- High Compressive Strength
- High Elongation
- UV-filter
 - Discoloring, no degradation



Applications

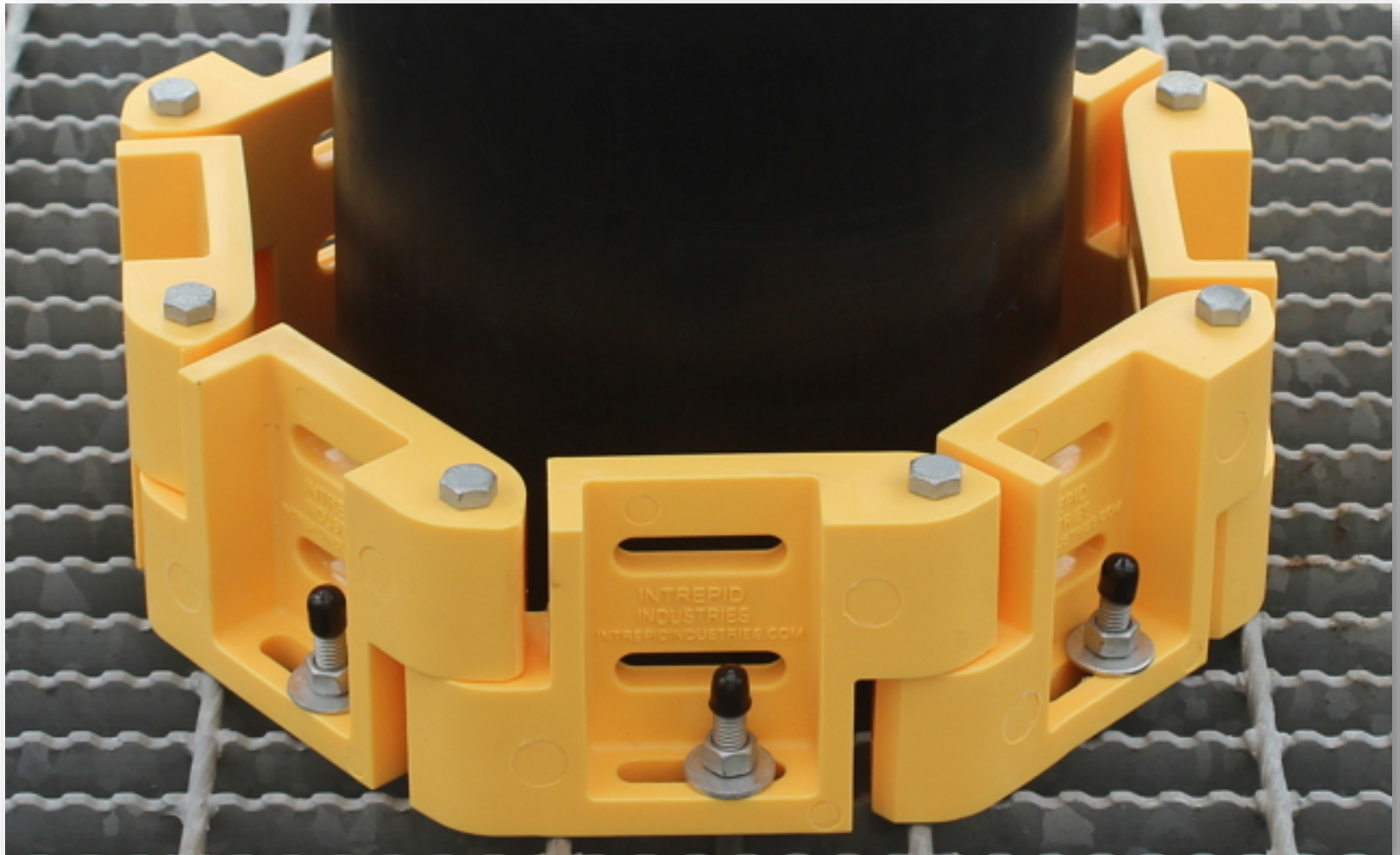
Bus Bar Insulators

--- Various Types that Intrepid Has Molded (1996 - present) ---





ISP Insulators Are Strong Enough To Support Heavy Bus Bars



Toeboard Links

T5



Toeboard Links T5-J v T5-L



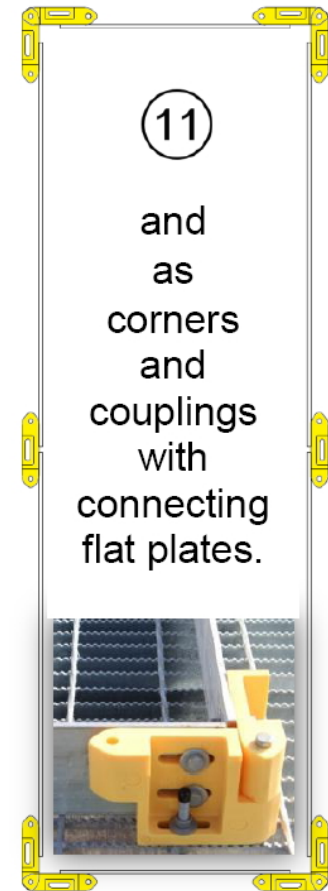
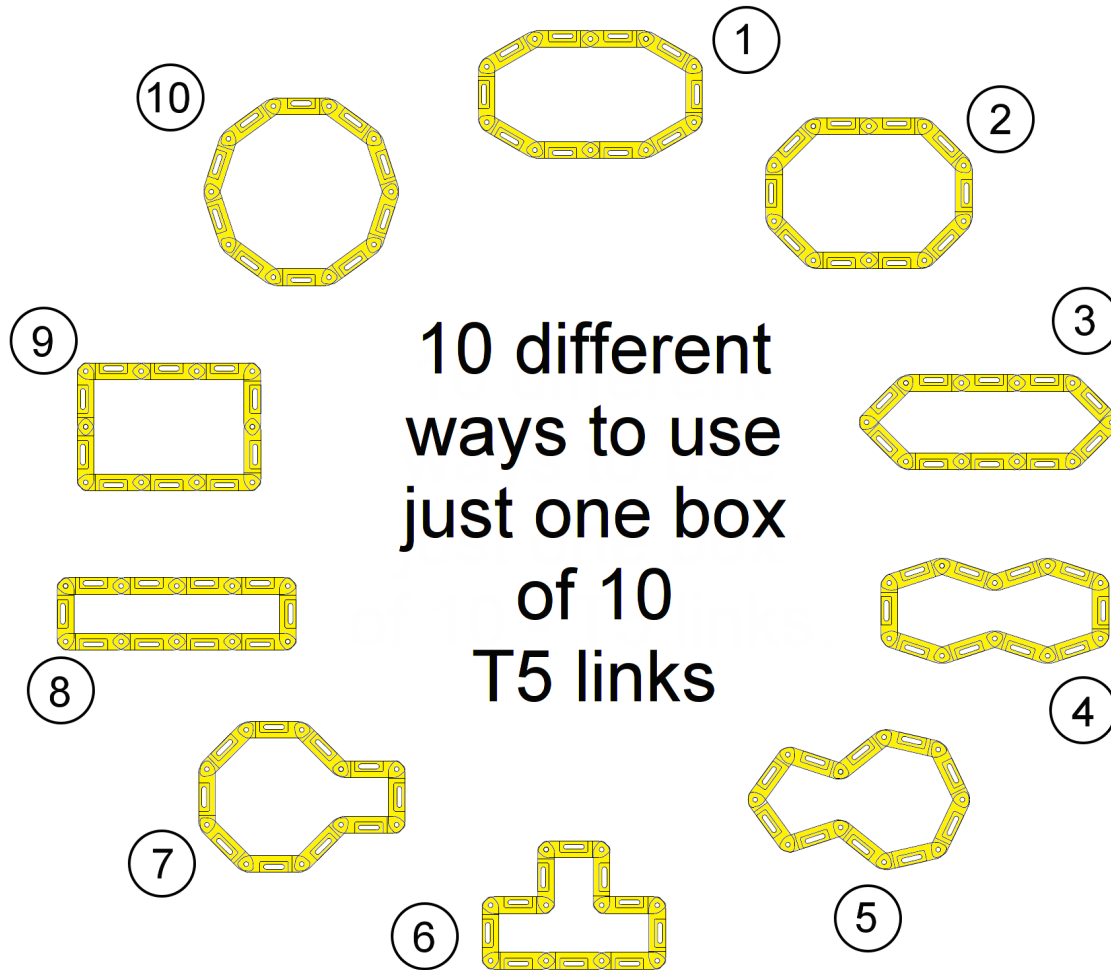
T5-J (J-Bolt)



T5-L (L-Bolt)



Toeboard Links Opening Layouts

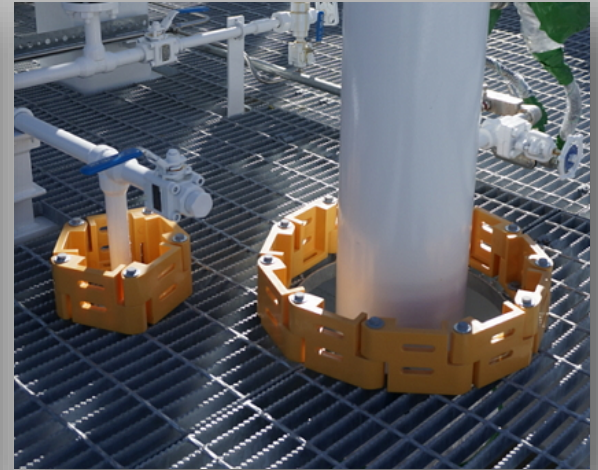
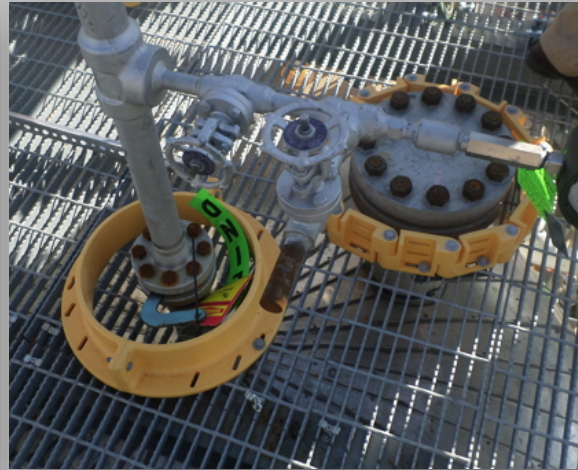
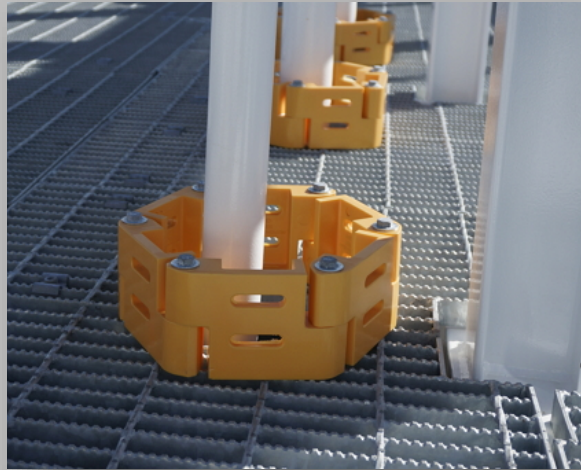


Just think what you can do with a larger box of 40 !



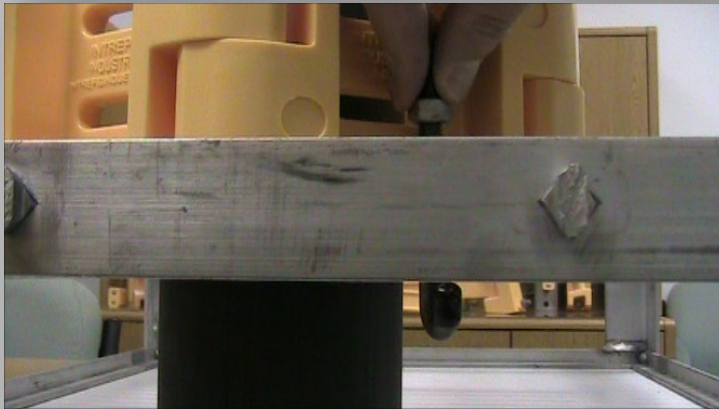
TOEBOARD LINKS

Applications





T5-J Installation



① Easy, Bolt-On Installation

② All From The Top Of Grating

③ No Hot Work

④ Will Not Work On I-Bar And T-Bar Grating (T5-L Needed)



THANK YOU!



INTREPID INDUSTRIES INC.

2305 S. Battleground Road
La Porte, TX 77571-9475

T: 281.479.8301
F: 281.479.3453

sales@intrepidindustries.com
www.intrepidindustries.com