

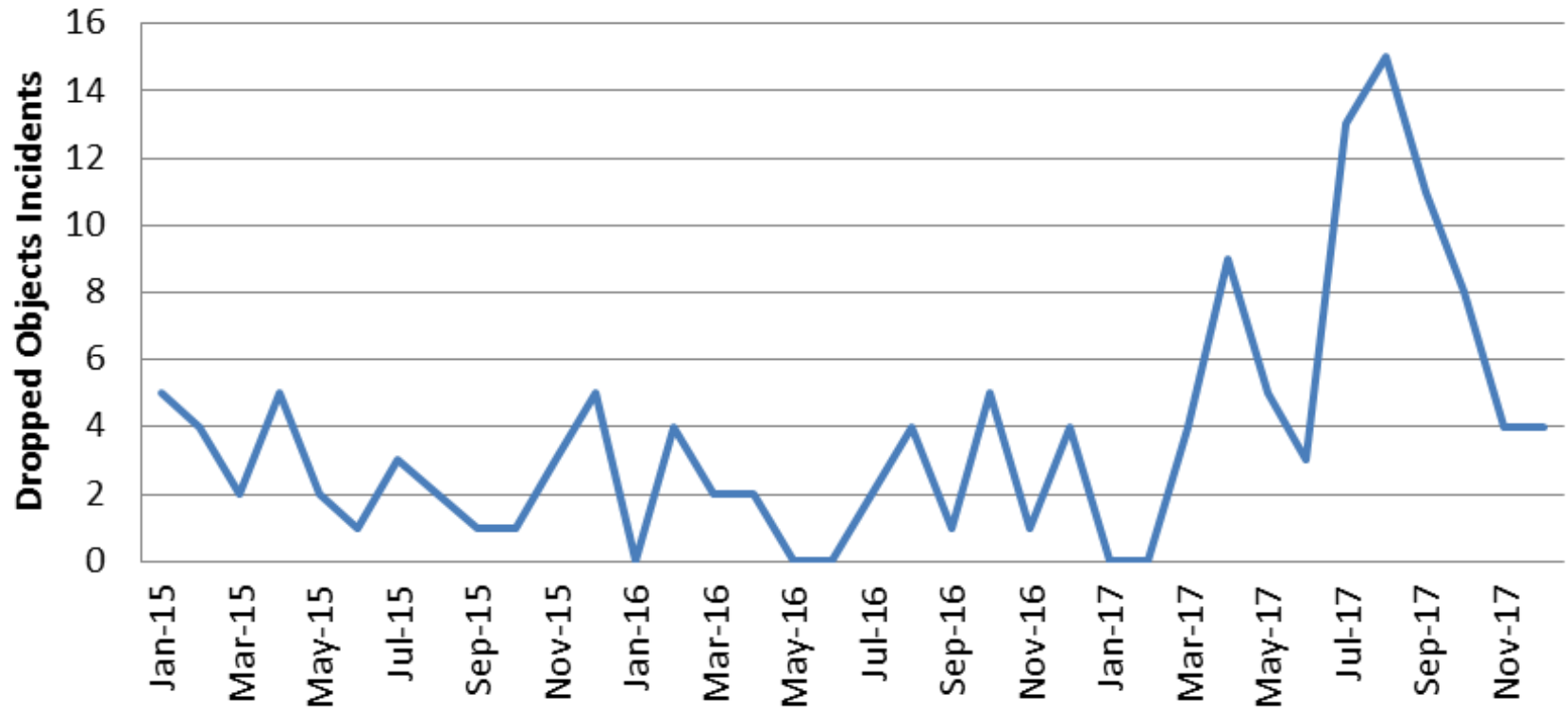
An offshore oil rig is shown against a cloudy sky at dusk or dawn. The rig features a prominent yellow crane and a derrick with the Nexen logo. The ocean is visible in the background.

Dropped Object Prevention 2018



A New Energy

Dropped Objects 2015-2017









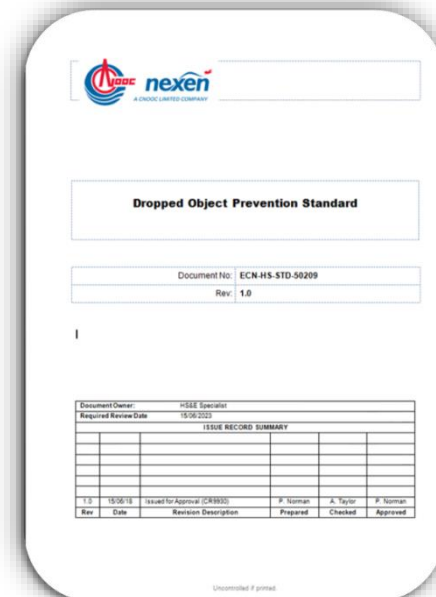


Dropped Object Prevention Standard



High Level Requirements

- Surveys required every 3 years or before Drilling Rig start up
- Platform mapped into zones prior to / or on first day of the survey
- PDO's categorised by risk (i.e. Red Zone = HC plant / high traffic area)
- NOPRAS required for any remaining PDO's in Red / Orange Zones
- Unnecessary equipment (not maintained) to be removed / made safe
- Tools used during WAH to be tethered / logged by the work party
- WAH toolkits, lanyards, bags, matting etc to be purchased
- Safe Transportation Labels to be signed by cargo packers/checkers
- PDO's (high / medium risk) must be reported in Enablon
- SAP now has a dedicated failure code to allow monitoring of PDO's
- Fixed equipment in Red / Orange Zones that has potential to be detached from its fixings (weather, collision, vibration) must have safety / secondary retention fitted



Category	AS-IS	REASON	RISK	STATUS	COMMENTS
Plan	Review the plan to ensure that the DOP is reviewed on a regular basis	Periodic Review	30000	Green	
	Review the plan to ensure that the DOP is reviewed on a regular basis	Periodic Review	30000	Green	
Maintenance	Review the plan to ensure that the DOP is reviewed on a regular basis	Periodic Review	30000	Green	
	Review the plan to ensure that the DOP is reviewed on a regular basis	Periodic Review	30000	Green	
Risk & Research	Review the plan to ensure that the DOP is reviewed on a regular basis	Periodic Review	30000	Green	
	Review the plan to ensure that the DOP is reviewed on a regular basis	Periodic Review	30000	Green	
Reporting	Review the plan to ensure that the DOP is reviewed on a regular basis	Periodic Review	30000	Green	
	Review the plan to ensure that the DOP is reviewed on a regular basis	Periodic Review	30000	Green	
Bridges	Review the plan to ensure that the DOP is reviewed on a regular basis	Periodic Review	30000	Green	
	Review the plan to ensure that the DOP is reviewed on a regular basis	Periodic Review	30000	Green	
Safety	Review the plan to ensure that the DOP is reviewed on a regular basis	Periodic Review	30000	Green	
	Review the plan to ensure that the DOP is reviewed on a regular basis	Periodic Review	30000	Green	

Workforce Engagement Workshops



DROPPED OBJECT PREVENTION WORKSHOP



Common Causes of Dropped Objects	Behaviours What should individuals do to prevent dropped objects?	Processes What should the company do to prevent dropped objects?	Equipment Is there anything we need to prevent dropped objects?
Loose Objects	SECURE IF POSSIBLE WITH CORRECT FITTING RETRIEVE IF REQUIRED REMOVE	SUITABLE INSTRUCTIONS / TRAINING / TEST	LAMINAROS, TOOLBAGS, WORK BAGS / CONTAINERS, MATTING
Fixed Equipment	REGULAR INSPECTIONS, CHECK SURROUNDINGS BEFORE STARTING EACH TASK TO SEE IF CAN REMOVE REDUNDANT EQUIPMENT	REGULAR SITE INSPECTIONS IDENTIFY DETERIORATION / CORROSION ETC	MAINTAIN EQUIPMENT
Unnecessary Equipment	IDENTIFY AND LOG AND REDUNDANT EQUIPMENT	IDENTIFICATION ON SITE TOOLS OF EQUIPMENT THAT REQUIRES REMOVAL	REMOVE IF POSSIBLE MAINTAIN IF NECESSARY
Corrosion	IDENTIFY AND NOTIFY CORRODED EQUIPMENT REPORT	REGULAR INSPECTION REGIMES AND ENSURE PROPER MAINTENANCE / CLEANING OF ANY SALT / SEAWATER ETC	REGULAR PM
Vibration	IDENTIFICATION OF EXCESS VIBRATION INSUFFICIENT SUPPORTS	REGULAR INSUFFICIENT SUPPORTS AREA OWNERSHIP, MAINTAIN PUMPS/ EQUIPMENT CAUSING VIBRATION	SUITABILITY PROCESS CON
Weather	IDENTIFICATION OF ANY LOOSE OBJECTS/ EQUIPMENT WITH POTENTIAL TO MOVE DURING ADVERSE WEATHER	ENSURE EQUIPMENT IS SUFFICIENTLY SECURED. CHECK PPE AND PEST SYSTEMS.	SUPPLY OR FOR LOOSE CHECKS
Working at Height	ENSURE ALL TOOL AND EQUIPMENT ARE SECURED BY LAMINAROS. GOOD HOUSEKEEPING	SUPPLY ADEQUATE TOOLS / EQUIPMENT CHECKLIST FOR EACH JOB.	SUPPLY W TOOLS / EQ TOOLBAGS
Drilling	FOLLOW PROCEDURES GOOD MANUAL HANDLING. CORRECT TBTS / TECHNIQUE	MINIMISE EQUIPMENT MOVEMENT BARRIERS IN PLACE WHEN WORKING	BARRIERS, SUPPLIED.
Cargo Handling	GOOD SPATIAL AWARENESS REGULAR CHECKS ON ALL LOADS FOR PPOCS ABOVE & LOOSE UNLASHED LOADS	CHECKLIST - GOOD CHECKS ON AND AROUND EQUIPMENT AND AREAS BELOW LOAD.	SUPPLY ADEQ ALL AREAS MOVED.
Reporting	INDIVIDUALS TO PROMPTLY REPORT ANY PPOCS. DON'T ASSUME SOMEONE ELSE WILL DO IT	GOOD REPORTING - OBSERVATION CARDS	PPE
Survey Inspections	REGULAR INSPECTION BY SUITABLY TRAINED INSPECTORS & RATING PERSONNEL	ALLOCATE SUFFICIENT TIME FOR THE TASK	SUPPLY AND TO CARRY O
Audits	REGULAR CHECKS AND BALANCES TO CHECK INSPECTIONS ARE CARRIED OUT		CHECK AUDI



3 production assets / 5 week period / 123 work groups / 1000+ suggestions & comments