

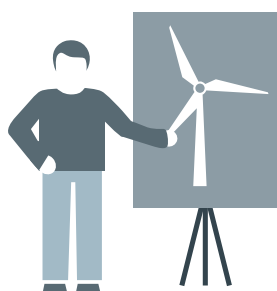
Stop the drop

Let's work together to put a stop to objects dropping from wind turbines!

During fiscal year 2016, there was an increase in the number of accidents caused by objects being dropped by people working inside the turbine tower or at the open nacelle.

The top five objects dropped were: **radios, mobile phones, tablet devices, sockets, and handheld tools.**

At **back office**, all tools and equipment are designed to be secured, and appropriate tool tethers are available.



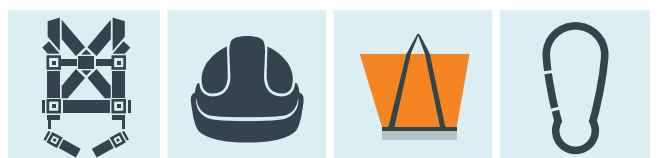
At the **site office**, you take the most important step toward working safely in the turbine: **planning.**

- This begins with the toolbox talk, a review risk assessment and work instruction for objects that could drop.
- Based on this, you can plan which tethers are needed for the objects you're taking up the tower to ensure that they will not drop.

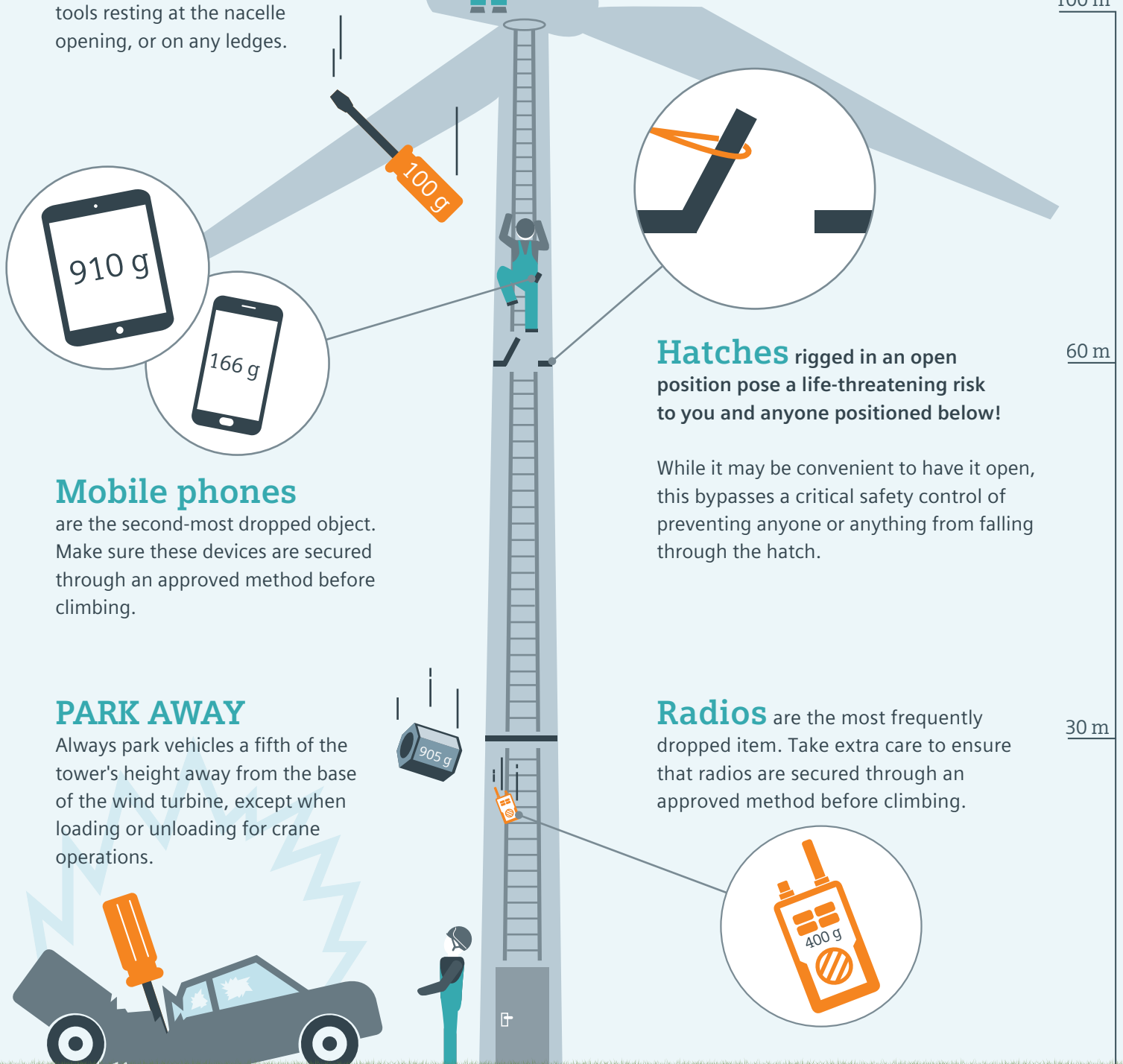
Final safety check

Before you start **climbing** or **lifting**, perform one last safety check: are all tools and electronic devices safely tethered or stowed in toolbags?

If they're not, please don't climb the tower or start lifting – get the correct equipment and make sure it's safely secured.



Even light **handheld tools** can do serious harm when they drop from the top of the turbine. Always make sure that there are no tools resting at the nacelle opening, or on any ledges.



Mobile phones

are the second-most dropped object. Make sure these devices are secured through an approved method before climbing.

PARK AWAY

Always park vehicles a fifth of the tower's height away from the base of the wind turbine, except when loading or unloading for crane operations.

Hatches rigged in an open position pose a life-threatening risk to you and anyone positioned below!

While it may be convenient to have it open, this bypasses a critical safety control of preventing anyone or anything from falling through the hatch.

Radios are the most frequently dropped item. Take extra care to ensure that radios are secured through an approved method before climbing.

#StopTheDrop

Remember, the person who drops the object is not the one who will be injured. Please ensure that you do the following so you do not injure a co-worker:

- Always close the hatch after you have passed it.
- Look for tools and objects that can be dropped and use the tethers provided to secure them.
- To prevent them from dropping, do not place any items next to openings.
- Only take items that can be tethered.

