

Worker Crushed by Pumpjack Equipment

Description:

Two workers were removing an alignment bolt from an out-of-service pumpjack horse head at a storage yard. The horse head was connected to the walking beam and situated in an upright position, therefore containing stored energy. “Worker A” was positioned under the walking beam. When “Worker B” began removing the alignment bolt, the walking beam collapsed, crushing and fatally injuring “Worker A”.

Lessons Learned:

- The stored energy hazard of the elevated horse head and walking beam was not identified or controlled.
- An out-of-service pumpjack was stored in an upright or elevated position and the horse head had remained attached to the walking beam. The safety bar that secures the horse head to the walking beam was not in place.
- A worker was positioned in the line of fire when the alignment bolt was loosened and the walking beam fell.

Life Saving Rule:

This safety alert relates to the Line of Fire [Life Saving Rule](#).



LINE OF FIRE

Keep yourself and others out of the line of fire.

I position myself to avoid:

- Moving objects
- Vehicles
- Pressure releases
- Dropped objects



Image of the fallen equipment.

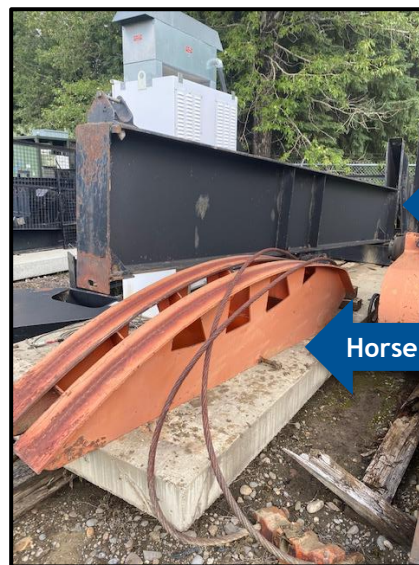


Image of properly stored pumpjack. Horse head and walking beam are disassembled and stored separately on the ground.

What did they learn? What were the recommendations:

- Inspect storage yards for stored energy hazards associated with pumpjacks, components and other equipment and ensure controls are in place.
- Disassemble and store out-of-service pumpjack components separately and on the ground.
- Perform a risk assessment of other stored materials or equipment that could fall or present a potential stored energy hazard and ensure the appropriate controls are in place.
- Discuss this incident at safety meetings to highlight the importance of completing a comprehensive hazard assessment before starting work.

Help industry by sharing learnings from an incident. [Submit your Safety Alert.](#)

SHARE AND COLLABORATE

Energy Safety Canada (ESC) works collaboratively with industry to share information aimed at helping companies of all sizes improve safe work performance.

DISCLAIMER

Use of this document or any information contained herein is at the user's sole risk. ESC makes no representations and assumes no liability. For further information on these restrictions, go to <http://www.energysafetycanada.com/legal.cfm>

COPYRIGHT/RIGHT TO REPRODUCE

Copyright for this document is held by Energy Safety Canada, 2020. All rights reserved. Energy Safety Canada encourages the copying, reproduction and distribution of this document to promote health and safety in the workplace, if Energy Safety Canada is acknowledged. However, no part of this publication may be copied, reproduced or distributed for profit or other commercial enterprise, nor may any part be incorporated into any other publication, without written permission of Energy Safety Canada.